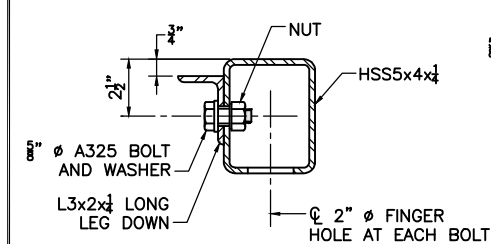
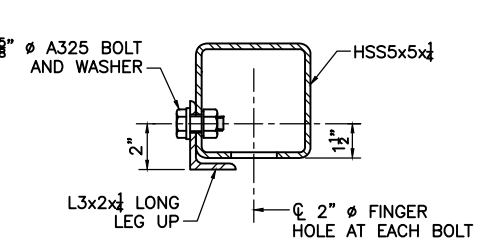


BRIDGE RAILING ELEVATION
SCALE: 1" = 1'-0"

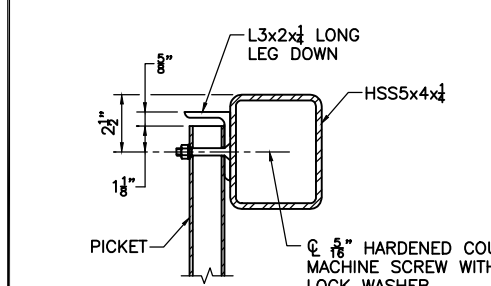
NOTE:
ELEVATION AT SIDEWALK SHOWN. ELEVATION AT SAFETY CURB SIMILAR EXCEPT AS NOTED.



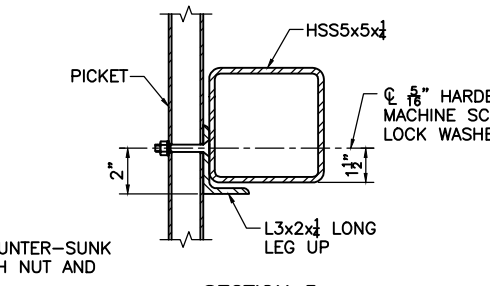
SECTION 2



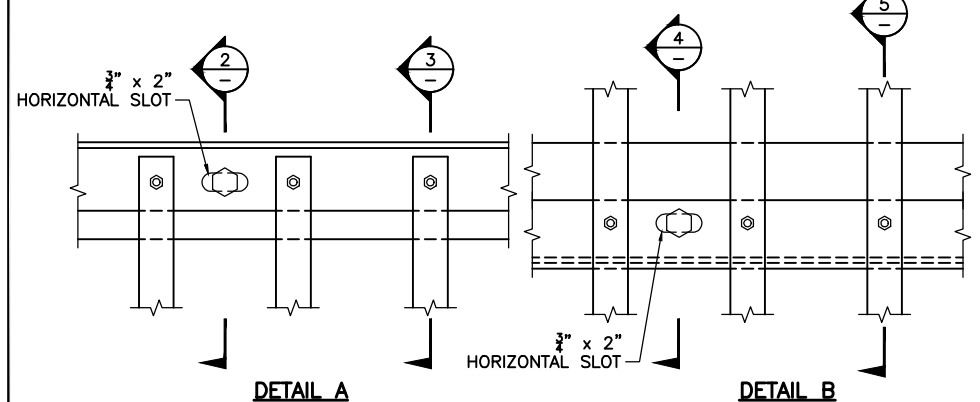
SECTION 4



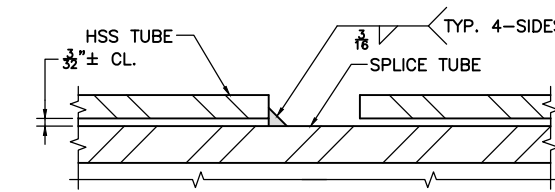
SECTION 3



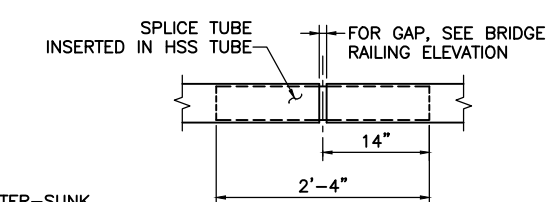
SECTION 5



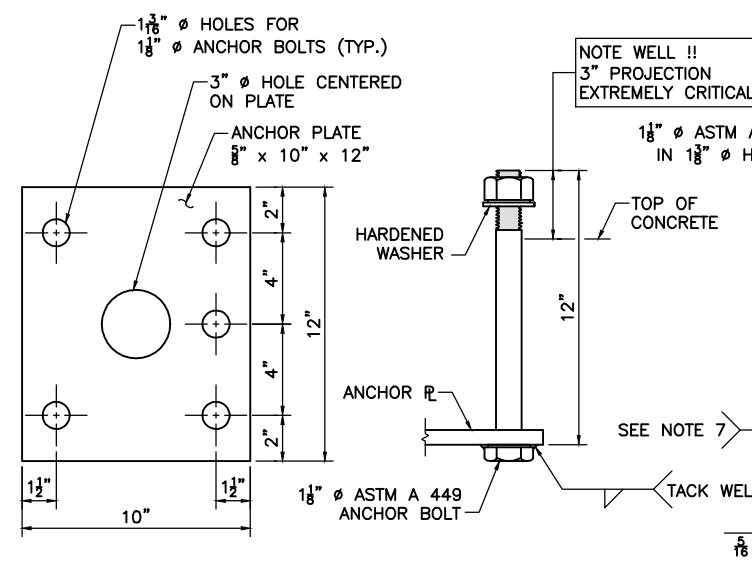
TYPICAL PICKET TO RAIL DETAILS
SCALE: 3" = 1'-0"



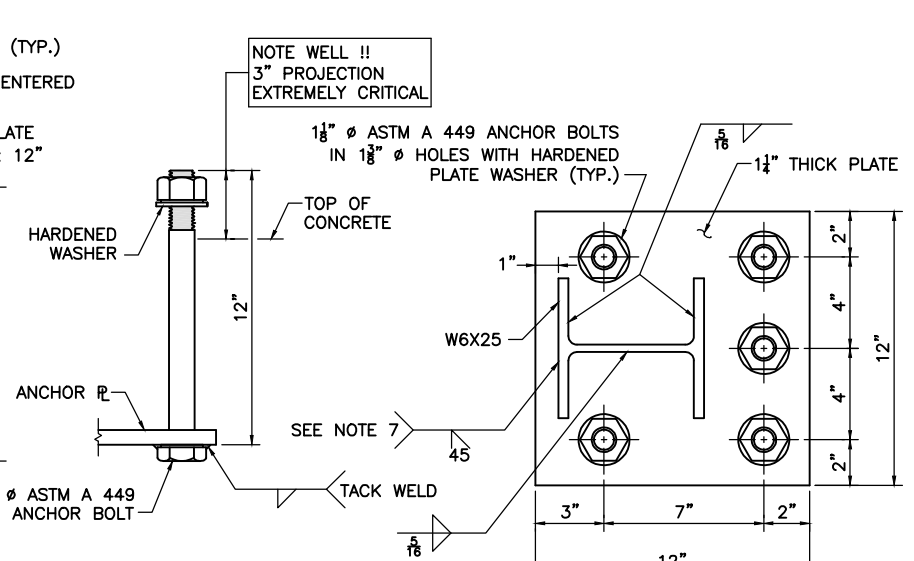
SPlice DETAIL
FULL SIZE



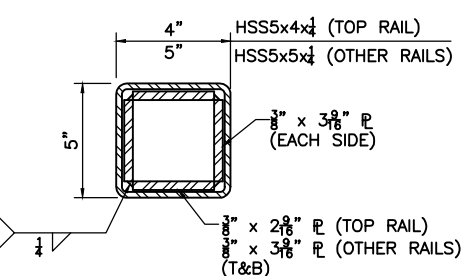
TYPICAL SPlice
SCALE: 1" = 1'-0"



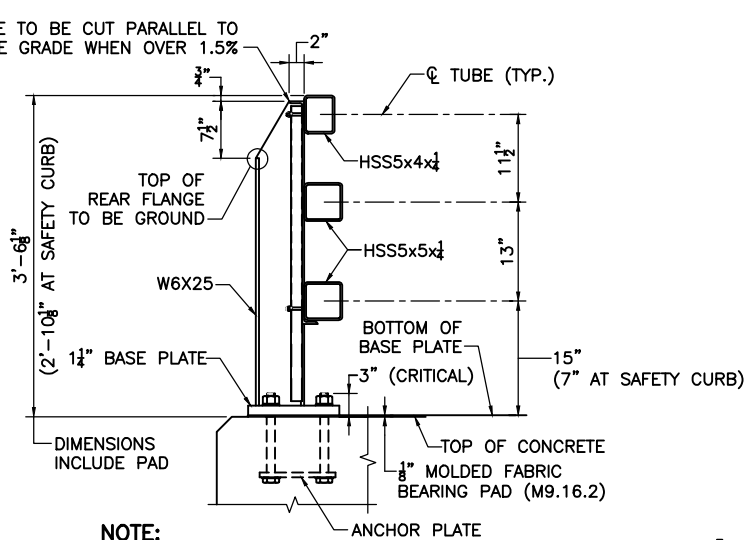
ANCHOR PLATE
SCALE: 3" = 1'-0"



ANCHOR BOLT
SCALE: 3" = 1'-0"



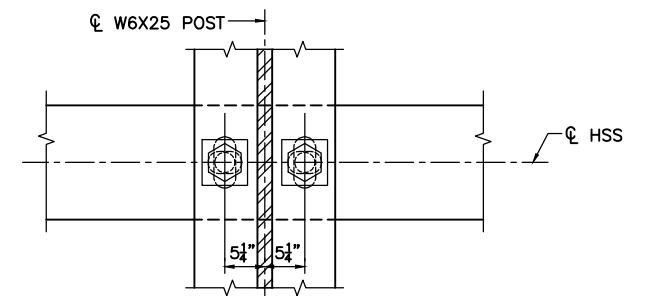
SPlice TUBE DETAILS
SCALE: 3" = 1'-0"



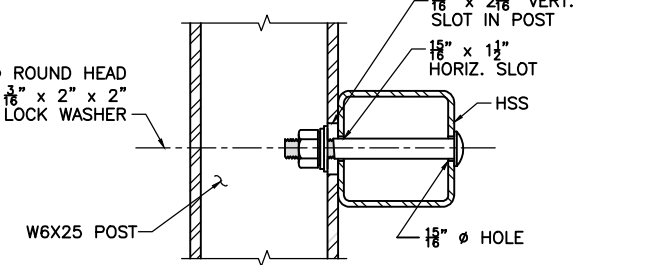
NOTE:
SECTION AT SIDEWALK SHOWN. SECTION AT SAFETY CURB SIMILAR, EXCEPT AS NOTED.

SECTION 1
SCALE: 1" = 1'-0"

7/8" Ø ROUND HEAD BOLT
SCALE: 3" = 1'-0"



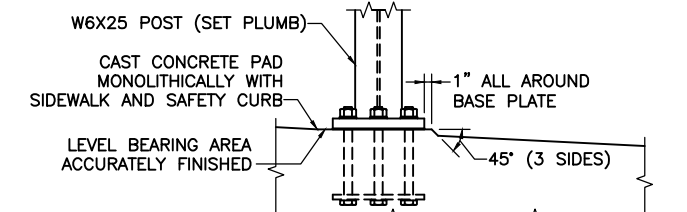
SECTION THRU POST WEB



SECTION THRU RAIL

NOTE:
CONNECTIONS AT LOWER RAILS SHOWN. CONNECTIONS AT TOP RAIL SIMILAR.

TYPICAL RAIL TO POST CONNECTIONS
SCALE: 1" = 1'-0"



SETTINGS OF POSTS (PROFILE GRADE OVER 1.5%)
SCALE: 1" = 1'-0"

- RAILING NOTES:**
1. RAIL POST AND BASE PLATES SHALL CONFORM TO THE REQUIREMENTS OF AASHTO M 270 GRADE 50. HOLLOW RAILING STRUCTURAL TUBING (HSS) SHALL CONFORM TO THE REQUIREMENTS OF ASTM A 500 WITH A CERTIFIED $F_y = 50$ KSI MINIMUM. THE MINIMUM HORIZONTAL BENDING RADIUS OF THE HSS TUBING SHALL BE 8 FEET. PICKET CARRIER ANGLES, ANCHOR PLATES, AND SPlice TUBE PLATES SHALL CONFORM TO THE REQUIREMENTS OF AASHTO M 270 GRADE 36. PICKET TUBING SHALL CONFORM TO ASTM A 513 WITH $F_y = 36$ KSI MIN. OR A 500 GRADE B.
 2. ALL STEEL (EXCEPT THE 5/8" ANCHOR PLATE AND FASTENERS) SHALL BE GALVANIZED AND PAINTED DARK BRONZE (FEDERAL STD. 595B COLOR NO. 10045). ANCHOR PLATE SHALL BE GALVANIZED ONLY. HEADS OF 7/8" Ø ROUND HEAD BOLTS SHALL BE PAINTED TO MATCH RAIL.
 3. ANCHOR BOLTS SHALL BE SET WITH TEMPLATES. THE NUT SECURING THE POST BASE PLATE TO THE CONCRETE SHALL BE TIGHTENED TO A SNUG FIT AND GIVEN AN ADDITIONAL 1/8 TURN AFTER STEEL IS IN PLACE.
 4. RAILS SHALL BE CONTINUOUS OVER A MINIMUM OF FOUR (4) POSTS WITHOUT SPLICES WHERE POSSIBLE. RAILS SHALL BE SPLICED IN THE PANELS OVER EXPANSION JOINT.
 5. ENDS OF TUBE SECTIONS SHALL BE SAWED. GRIND SMOOTH EXPOSED EDGES. ALL CUT ENDS SHALL BE TRUE AND SMOOTH.
 6. ALL POSTS TO BE PLUMB WHEN PROFILE GRADE EXCEEDS 1.5%. FOR PROFILE GRADES LESS THAN 1.5%, POSTS SHALL BE SET PERPENDICULAR TO GRADE.
 7. POST FLANGE WELD DOES NOT REQUIRE MAGNETIC PARTICLE TESTING. WELD SHALL BE BACK-GOUGED ON BACK SIDE EXCEPT AT WEB. WELD IS THE SAME ON BOTH FLANGES.
 8. 7/8" Ø ROUND HEAD BOLTS SHALL CONFORM TO THE CHEMICAL AND PHYSICAL REQUIREMENTS OF AASHTO M 164.

MS3-TL4 BRIDGE RAILING

PROJECT FILE NO.	MDS Barriers 43 Franklin St East Hartford CT 06108 Tel: 860-289-8035 Fax: 860-289-8035 e-mail: info@MDSbarriers.com	DATE 06 / 2013	SCALE	DESIGN MA
	DRAWING MS-TL4 STEEL BARRIER COLOR GALVANIZED			